



Bringing Excellence To Agri Technology

INTEGRATED MANUFACTURERS OF PLOUGH SHAFTS AND ACCESSORIES

EXPLORE US

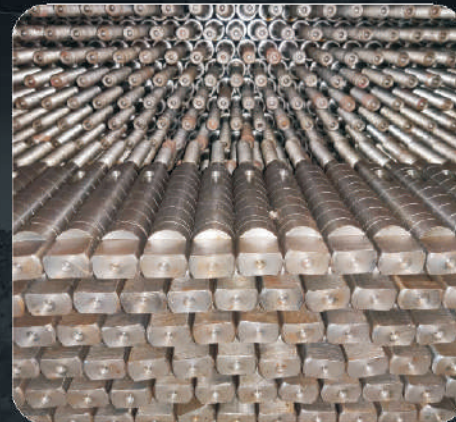
GANESH AGRO INDUSTRIES is a leading OEM Supplier of Mechanical, Slow Mechanical and Hydraulic Reversible Plough Accessories. Our installed capacity is 19000 shafts per annum. In accordance with industry set norms and standards, we are indulged in offering a wide array of Reversible Plough accessories to our respected customers. These offered products are stringently examined on varied parameters to make sure their perfection by our quality analyzers on well-defined parameters. Along with this, these products are obtainable at very rock bottom prices.

WHY CHOOSE US?

- 1. Honest and Dependable**
In accordance with industry set norms and standards.
- 2. Rock Bottom Prices**
Wide array of Reversible Plough accessories suitable for variety of agriculture sectors at the best price.
- 3. Quality Products**
Stunning agricultural products that move the spirit have always been rare. Explore us now.
- 4. Suitable For Cultivating All Types Of Soils**
Leading OEM Supplier of Mechanical, Slow Mechanical and Hydraulic Reversible Plough Accessories.

INFRASTRUCTURE AT A GLANCE

D&D[®] PLOUGH





PAN
India
 PRESENCE

OUR ESTEEMED CLIENTS



PRABHAT KRISHI YANTRA PVT LTD



MALAIYA AGRO ENGINEERING PVT LTD



MUKESH AGRO INDUSTRIES



AWACHAT INDUSTRIES LTD.



BALAJI
 ENGINEERING WORKS

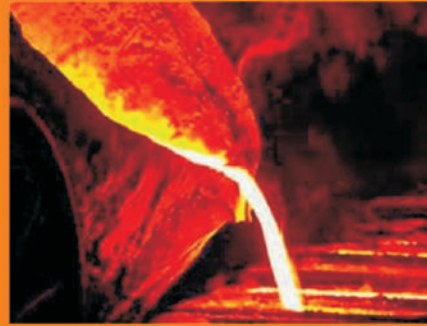
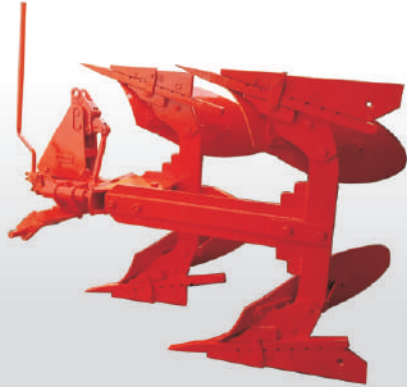


BHARAT ENGINEERING COMPANY



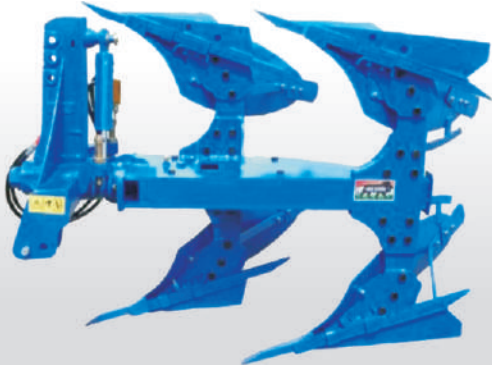
JADHAO GROUP OF COMPANIES

D&D[®] PLOUGH



CAPTIVE FOUNDRY FOR
MAINTAINING STRINGENT QUALITY
AND UNINTERRUPTED SUPPLY

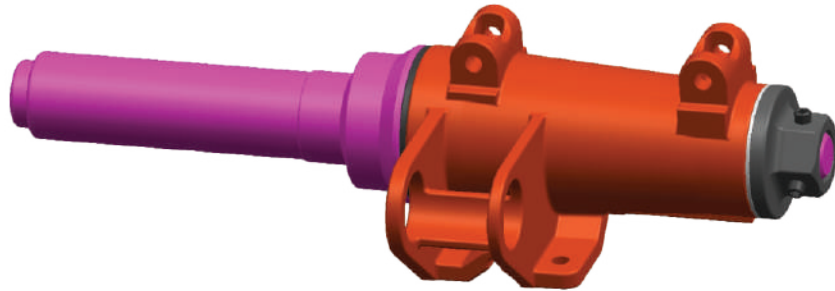
CAPACITY: 500 MTPA



IN HOUSE FACILITIES FOR
MACHINING USING LATEST
EQUIPMENTS TO IMPLY CUTTING
EDGE TECHNOLOGY



STATE OF THE ART PREMISES
WITH ENERGY EFFICIENT AND ECO
FRIENDLY INFRASTRUCTURE



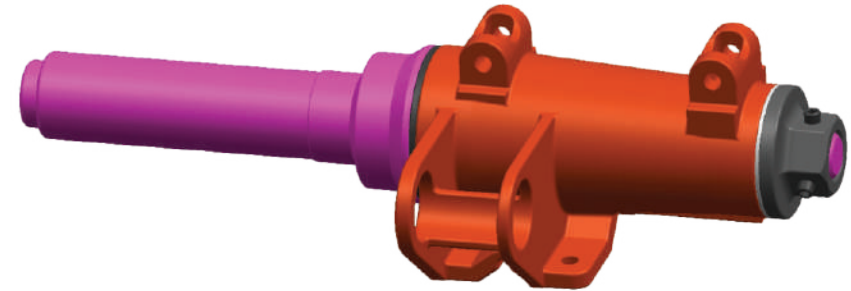
AGRICULTURE REVERSIBLE PLOUGH MECH. SET (HALF)-45

ITEM CODE: 270945H

| | | |
|---|-----------------------|--------------------------------|
| 1 | SHAFT MATERIAL | GRADED STEEL |
| 2 | HOUSING MATERIAL | GRADED STEEL CASTING |
| 3 | SHAFT DIAMETER | 80MM |
| 4 | SHAFT NUT & WOSHER | SINGLE PIECE GRADED SG CASTING |
| 5 | HAULING CAPACITY | 45 HP |
| 6 | TURNOVER MECH. | MECHANICAL ADJUSTER |
| 7 | MAX. WEIGHT OF PLOUGH | 400 KG |
| 8 | NO. OF FURROWS | 02 |
| 9 | ANTI FRICTION MECH. | NEEDLE BEARING |

SALIENT FEATURES

- ANTI FRICTION WOSHER WHICH INCREASES DURABILITY AND ALSO ENABLES SMOOTH ROTATING MOTION BETWEEN HOUSING AND LIMITING RING.
- HOUSING DESIGN WHICH SUPPORTS PERFECT ACCOMODATION OF PIPE (GUN WITH ALMOST ZERO TOLERANCE.
- SINGLE PIECE NUT & WOSHER WITH ALLEN KEY CLAMPING WHICH MAKES ASSEMBLING AND DISMANTLING HASSLE FREE.
- MAXIMUM DISTANCE FROM CENTRAL AXIS FOR OPTIMUM TORQUE GENERATION.
- THREADING AT THE REAR END OF THE SHAFT FOR EASY CLAMPING.



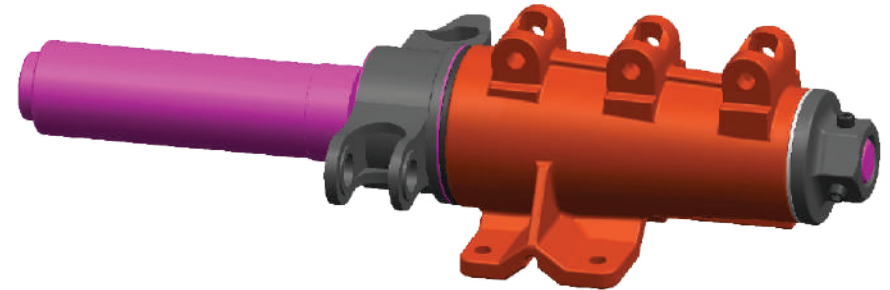
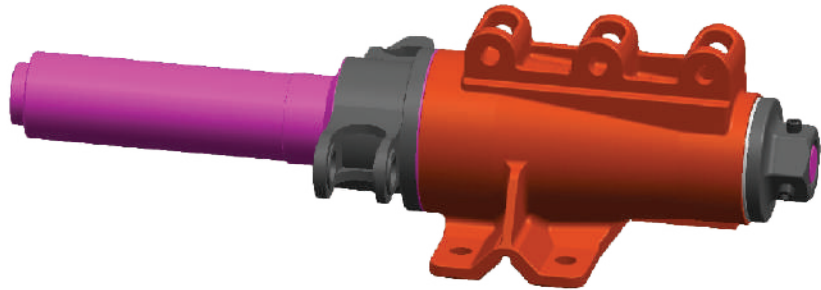
AGRICULTURE REVERSIBLE PLOUGH MECH. SET (HALF)-50

ITEM CODE: 270950H

| | | |
|---|-----------------------|--------------------------------|
| 1 | SHAFT MATERIAL | GRADED STEEL |
| 2 | HOUSING MATERIAL | GRADED STEEL CASTING |
| 3 | SHAFT DIAMETER | 85MM |
| 4 | SHAFT NUT & WOSHER | SINGLE PIECE GRADED SG CASTING |
| 5 | HAULING CAPACITY | 50 HP |
| 6 | TURNOVER MECH. | HYDRAULIC CYLINDER |
| 7 | MAX. WEIGHT OF PLOUGH | 450 KG |
| 8 | NO. OF FURROWS | 02 |
| 9 | ANTI FRICTION MECH. | NEEDLE BEARING |

SALIENT FEATURES

- ANTI FRICTION WOSHER WHICH INCREASES DURABILITY AND ALSO ENABLES SMOOTH ROTATING MOTION BETWEEN HOUSING AND LIMITING RING.
- HOUSING DESIGN WHICH SUPPORTS PERFECT ACCOMODATION OF PIPE (GUN WITH ALMOST ZERO TOLERANCE.
- SINGLE PIECE NUT & WOSHER WITH ALLEN KEY CLAMPING WHICH MAKES ASSEMBLING AND DISMANTLING HASSLE FREE.
- MAXIMUM DISTANCE FROM CENTRAL AXIS FOR OPTIMUM TORQUE GENERATION.
- THREADING AT THE REAR END OF THE SHAFT FOR EASY CLAMPING.



AGRICULTURE REVERSIBLE HYDRAULIC PLOUGH HUB SET-50

ITEM CODE: 2907

| | | |
|---|-----------------------|--------------------------------|
| 1 | SHAFT MATERIAL | GRADED STEEL |
| 2 | HOUSING MATERIAL | GRADED STEEL CASTING |
| 3 | SHAFT DIAMETER | 85MM |
| 4 | SHAFT NUT & WOSHER | SINGLE PIECE GRADED SG CASTING |
| 5 | HAULING CAPACITY | 50 HP |
| 6 | TURNOVER MECH. | HYDRAULIC CYLINDER |
| 7 | MAX. WEIGHT OF PLOUGH | 450/475 KGS |
| 8 | NO. OF FURROWS | 02 / 03 |
| 9 | ANTI FRICTION MECH. | NEEDLE BEARING |

SALIENT FEATURES

- SPECIALLY DESIGNED HOUSING TO SUPPORT THE HUB CAP UNIFORMLY.
- SINGLE PIECE GRADED STEEL FORGING FOR HYDRAULIC CY. CLAMPING.
- SINGLE PIECE NUT & WOSHER WITH ALLEN KEY CLAMPING WHICH MAKES ASSEMBLING AND DISMANTLING HASSLE FREE.
- THREADING AT THE REAR END OF THE SHAFT FOR EASY CLAMPING.
- FORGED PIN ALONG WITH SPRING WOSHER FOR HORIZONTALLY CLAMPING THE CYLINDER.

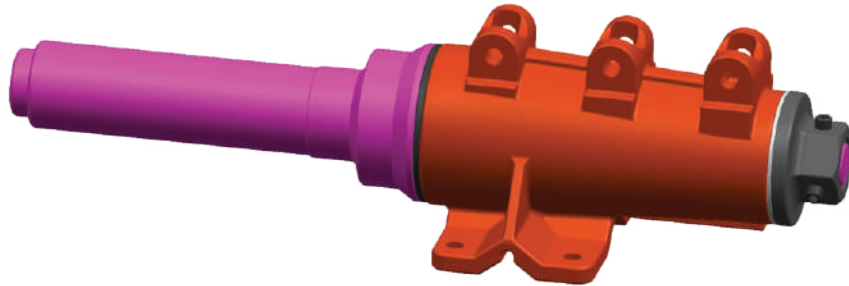
AGRICULTURE REVERSIBLE HYDRAULIC PLOUGH HUB SET-45

ITEM CODE: 2908

| | | |
|---|-----------------------|--------------------------------|
| 1 | SHAFT MATERIAL | GRADED STEEL |
| 2 | HOUSING MATERIAL | GRADED STEEL CASTING |
| 3 | SHAFT DIAMETER | 80MM |
| 4 | SHAFT NUT & WOSHER | SINGLE PIECE GRADED SG CASTING |
| 5 | HAULING CAPACITY | 45 HP |
| 6 | TURNOVER MECH. | HYDRAULIC CYLINDER |
| 7 | MAX. WEIGHT OF PLOUGH | 400 KG |
| 8 | NO. OF FURROWS | 02 |
| 9 | ANTI FRICTION MECH. | NEEDLE BEARING |

SALIENT FEATURES

- ANTI FRICTION WOSHER WHICH INCREASES DURABILITY AND ALSO ENABLES SMOOTH ROTATING MOTION BETWEEN HOUSING AND LIMITING RING.
- SINGLE PIECE GRADED STEEL FORGING FOR HYDRAULIC CY. CLAMPING.
- SINGLE PIECE NUT & WOSHER WITH ALLEN KEY CLAMPING WHICH MAKES ASSEMBLING AND DISMANTLING HASSLE FREE.
- MAXIMUM DISTANCE FROM CENTRAL AXIS FOR OPTIMUM TORQUE GENERATION.
- THREADING AT THE REAR END OF THE SHAFT FOR EASY CLAMPING.
- FORGED PIN ALONG WITH SPRING WOSHER FOR HORIZONTALLY CLAMPING THE CYLINDER.



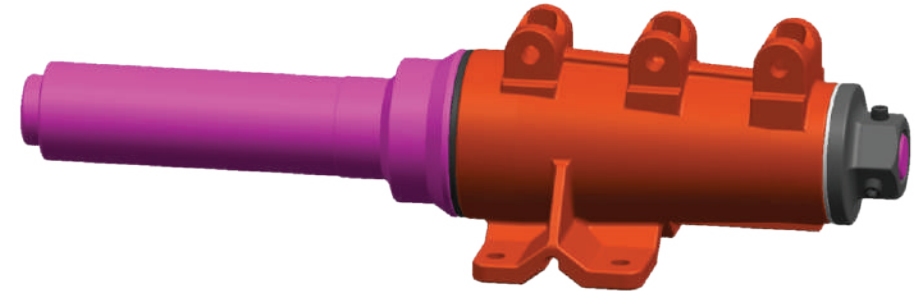
AGRICULTURE REVERSIBLE PLOUGH SLOW HUB SET-45

ITEM CODE: 121045

| | | |
|---|-----------------------|--------------------------------|
| 1 | SHAFT MATERIAL | GRADED STEEL |
| 2 | HOUSING MATERIAL | GRADED STEEL CASTING |
| 3 | SHAFT DIAMETER | 80MM |
| 4 | SHAFT NUT & WASHER | SINGLE PIECE GRADED SG CASTING |
| 5 | HAULING CAPACITY | 45 HP |
| 6 | TURNOVER MECH. | MECHANICAL ADJUSTER |
| 7 | MAX. WEIGHT OF PLOUGH | 450 KGS |
| 8 | NO. OF FURROWS | 02 |
| 9 | ANTI FRICTION MECH. | NEEDLE BEARING |

SALIENT FEATURES

- ANTI FRICTION WASHER WHICH INCREASES DURABILITY AND ALSO ENABLES SMOOTH ROTATING MOTION BETWEEN HOUSING AND LIMITING RING.
- SINGLE PIECE NUT & WASHER WITH ALLEN KEY CLAMPING WHICH MAKES ASSEMBLING AND DISMANTLING HASSLE FREE.
- MAXIMUM DISTANCE FROM CENTRAL AXIS FOR OPTIMUM TORQUE GENERATION.
- THREADING AT THE REAR END OF THE SHAFT FOR EASY CLAMPING.



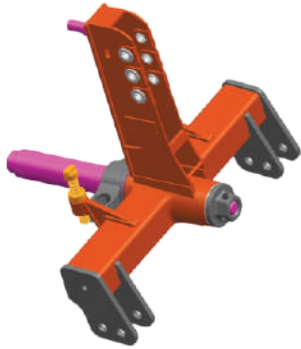
AGRICULTURE REVERSIBLE PLOUGH SLOW HUB SET-50

ITEM CODE: 121050

| | | |
|---|-----------------------|--------------------------------|
| 1 | SHAFT MATERIAL | GRADED STEEL |
| 2 | HOUSING MATERIAL | GRADED STEEL CASTING |
| 3 | SHAFT DIAMETER | 85MM |
| 4 | SHAFT NUT & WASHER | SINGLE PIECE GRADED SG CASTING |
| 5 | HAULING CAPACITY | 50 HP |
| 6 | TURNOVER MECH. | MECHANICAL ADJUSTER |
| 7 | MAX. WEIGHT OF PLOUGH | 450 KGS |
| 8 | NO. OF FURROWS | 02 |
| 9 | ANTI FRICTION MECH. | NEEDLE BEARING |

SALIENT FEATURES

- ANTI FRICTION WASHER WHICH INCREASES DURABILITY AND ALSO ENABLES SMOOTH ROTATING MOTION BETWEEN HOUSING AND LIMITING RING.
- SINGLE PIECE NUT & WASHER WITH ALLEN KEY CLAMPING WHICH MAKES ASSEMBLING AND DISMANTLING HASSLE FREE.
- MAXIMUM DISTANCE FROM CENTRAL AXIS FOR OPTIMUM TORQUE GENERATION.
- THREADING AT THE REAR END OF THE SHAFT FOR EASY CLAMPING.



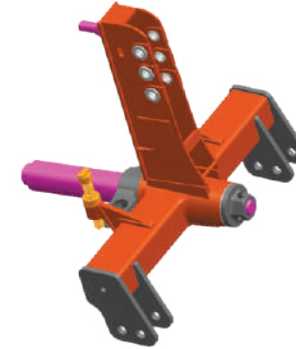
AGRICULTURE REVERSIBLE HYDRAULIC PLOUGH TOP TO BOTTOM-45

ITEM CODE: 2905E

| | | |
|---|-----------------------|--------------------------------|
| 1 | SHAFT MATERIAL | GRADED STEEL |
| 2 | HOUSING MATERIAL | GRADED STEEL CASTING |
| 3 | SHAFT DIAMETER | 80MM |
| 4 | SHAFT NUT & WOSHER | SINGLE PIECE GRADED SG CASTING |
| 5 | HAULING CAPACITY | 45 HP |
| 6 | TURNOVER MECH. | HYDRAULIC CYLINDER |
| 7 | MAX. WEIGHT OF PLOUGH | 450 KGS |
| 8 | NO. OF FURROWS | 02 |
| 9 | ANTI FRICTION MECH. | NEEDLE BEARING |

SALIENT FEATURES

- SINGLE PIECE GRADED STEEL FORGING FOR HYDRAULIC CY. CLAMPING.
- SINGLE PIECE NUT & WOSHER WITH ALLEN KEY CLAMPING WHICH MAKES ASSEMBLING AND DISMANTLING HASSLE FREE.
- THREADING AT THE REAR END OF THE SHAFT FOR EASY CLAMPING.
- FORGED PIN ALONG WITH SPRING WOSHER FOR HORIZONTALLY CLAMPING THE CYLINDER.
- HEAVY FORGED STOPPER BOLT FOR RESTRICTING THE MOTION OF CYLINDER.



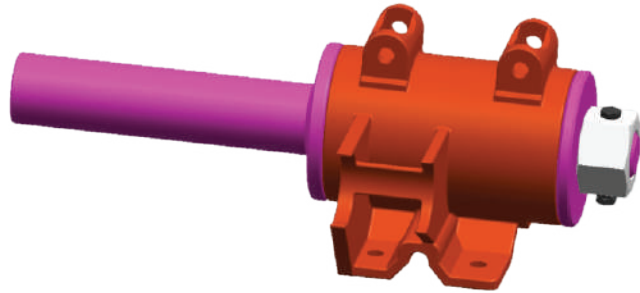
AGRICULTURE REVERSIBLE HYDRAULIC PLOUGH TOP TO BOTTOM-50

ITEM CODE: 2905M

| | | |
|---|-----------------------|--------------------------------|
| 1 | SHAFT MATERIAL | GRADED STEEL |
| 2 | HOUSING MATERIAL | GRADED STEEL CASTING |
| 3 | SHAFT DIAMETER | 85MM |
| 4 | SHAFT NUT & WOSHER | SINGLE PIECE GRADED SG CASTING |
| 5 | HAULING CAPACITY | 50 HP |
| 6 | TURNOVER MECH. | HYDRAULIC CYLINDER |
| 7 | MAX. WEIGHT OF PLOUGH | 450 KGS |
| 8 | NO. OF FURROWS | 02 |
| 9 | ANTI FRICTION MECH. | NEEDLE BEARING |

SALIENT FEATURES

- SINGLE PIECE GRADED STEEL FORGING FOR HYDRAULIC CY. CLAMPING.
- SINGLE PIECE NUT & WOSHER WITH ALLEN KEY CLAMPING WHICH MAKES ASSEMBLING AND DISMANTLING HASSLE FREE.
- THREADING AT THE REAR END OF THE SHAFT FOR EASY CLAMPING.
- FORGED PIN ALONG WITH SPRING WOSHER FOR HORIZONTALLY CLAMPING THE CYLINDER.
- HEAVY FORGED STOPPER BOLT FOR RESTRICTING THE MOTION OF CYLINDER.



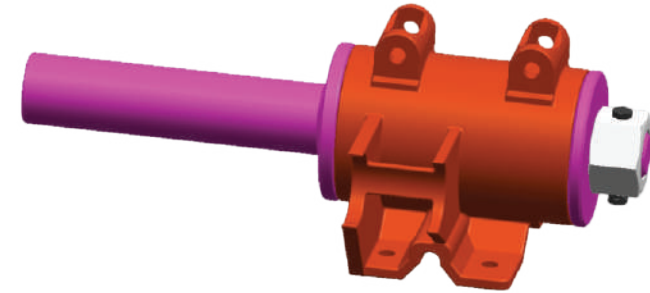
AGRI. REVER. PLOUGH MECH. MINI HUB SET-15

ITEM CODE: 2823

| | | |
|---|-----------------------|--------------------------------|
| 1 | SHAFT MATERIAL | GRADED STEEL |
| 2 | HOUSING MATERIAL | GRADED STEEL CASTING |
| 3 | SHAFT DIAMETER | 65MM |
| 4 | SHAFT NUT & WOSHER | SINGLE PIECE GRADED SG CASTING |
| 5 | HAULING CAPACITY | 15 HP |
| 6 | TURNOVER MECH. | HYDRAULIC CYLINDER |
| 7 | MAX. WEIGHT OF PLOUGH | 180 KGS |
| 8 | NO. OF FURROWS | 02 |
| 9 | ANTI FRICTION MECH. | NEEDLE BEARING |

SALIENT FEATURES

- ANTI FRICTION WOSHER WHICH INCREASES DURABILITY AND ALSO ENABLES SMOOTH ROTATING MOTION BETWEEN HOUSING AND LIMITING RING.
- SINGLE PIECE GRADED STEEL FORGING FOR HYDRAULIC CY. CLAMPING.HOUSING DESIGN WHICH SUPPORTS PERFECT ACCOMODATION OF PIPE (GUN WITH ALMOST ZERO TOLERANCE.
- SINGLE PIECE NUT & WOSHER WITH ALLEN KEY CLAMPING WHICH MAKES ASSEMBLING AND DISMANTLING HASSLE FREE.
- MAXIMUM DISTANCE FROM CENTRAL AXIS FOR OPTIMUM TORQUE GENERATION.
- THREADING AT THE REAR END OF THE SHAFT FOR EASY CLAMPING.



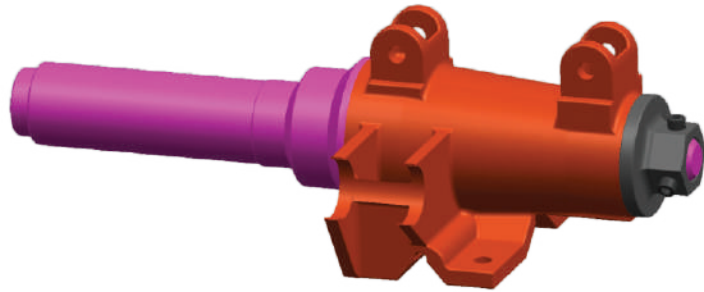
AGRI. REVER. PLOUGH MECH. MINI HUB SET-25

ITEM CODE: 2804

| | | |
|---|-----------------------|--------------------------------|
| 1 | SHAFT MATERIAL | GRADED STEEL |
| 2 | HOUSING MATERIAL | GRADED STEEL CASTING |
| 3 | SHAFT DIAMETER | 65MM |
| 4 | SHAFT NUT & WOSHER | SINGLE PIECE GRADED SG CASTING |
| 5 | HAULING CAPACITY | 25 HP |
| 6 | TURNOVER MECH. | HYDRAULIC CYLINDER |
| 7 | MAX. WEIGHT OF PLOUGH | 250 KGS |
| 8 | NO. OF FURROWS | 02 |
| 9 | ANTI FRICTION MECH. | NEEDLE BEARING |

SALIENT FEATURES

- ANTI FRICTION WOSHER WHICH INCREASES DURABILITY AND ALSO ENABLES SMOOTH ROTATING MOTION BETWEEN HOUSING AND LIMITING RING.
- SINGLE PIECE GRADED STEEL FORGING FOR HYDRAULIC CY. CLAMPING.HOUSING DESIGN WHICH SUPPORTS PERFECT ACCOMODATION OF PIPE (GUN WITH ALMOST ZERO TOLERANCE.
- SINGLE PIECE NUT & WOSHER WITH ALLEN KEY CLAMPING WHICH MAKES ASSEMBLING AND DISMANTLING HASSLE FREE.
- MAXIMUM DISTANCE FROM CENTRAL AXIS FOR OPTIMUM TORQUE GENERATION.
- THREADING AT THE REAR END OF THE SHAFT FOR EASY CLAMPING.



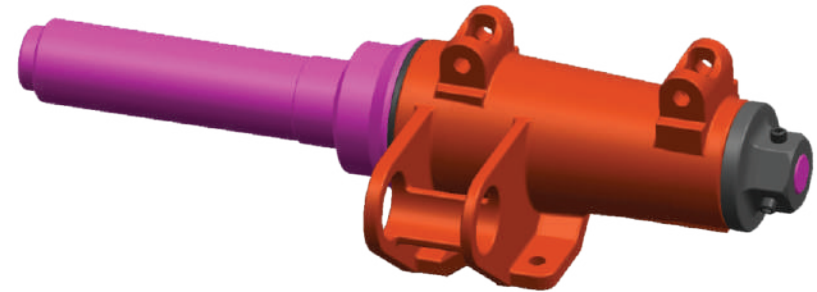
**AGRICULTURE REVERSIBLE PLOUGH MECH.
MEDIUM HUB SET-35/75**

ITEM CODE: 0104

| | | |
|---|-----------------------|--------------------------------|
| 1 | SHAFT MATERIAL | GRADED STEEL |
| 2 | HOUSING MATERIAL | GRADED STEEL CASTING |
| 3 | SHAFT DIAMETER | 75MM |
| 4 | SHAFT NUT & WOSHER | SINGLE PIECE GRADED SG CASTING |
| 5 | HAULING CAPACITY | 35 HP |
| 6 | TURNOVER MECH. | MECHANICAL ADJUSTER |
| 7 | MAX. WEIGHT OF PLOUGH | 350 KGS |
| 8 | NO. OF FURROWS | 02 |
| 9 | ANTI FRICTION MECH. | NEEDLE BEARING |

SALIENT FEATURES

- ANTI FRICTION WOSHER WHICH INCREASES DURABILITY AND ALSO ENABLES SMOOTH ROTATING MOTION BETWEEN HOUSING AND LIMITING RING.
- SINGLE PIECE GRADED STEEL FORGING FOR HYDRAULIC CY. CLAMPING. HOUSING DESIGN WHICH SUPPORTS PERFECT ACCOMODATION OF PIPE (GUN WITH ALMOST ZERO TOLERANCE.
- SINGLE PIECE NUT & WOSHER WITH ALLEN KEY CLAMPING WHICH MAKES ASSEMBLING AND DISMANTLING HASSLE FREE.
- MAXIMUM DISTANCE FROM CENTRAL AXIS FOR OPTIMUM TORQUE GENERATION.
- THREADING AT THE REAR END OF THE SHAFT FOR EASY CLAMPING.



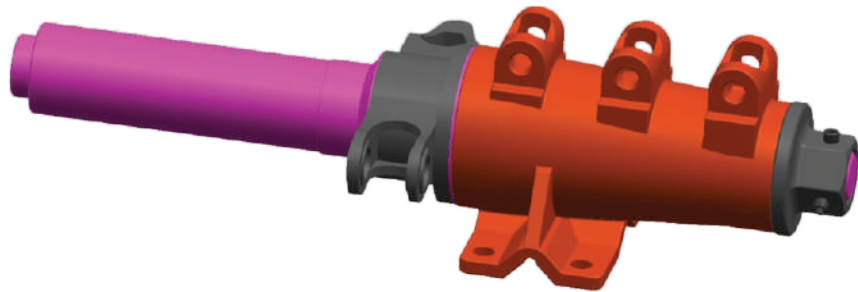
**AGRICULTURE REVERSIBLE PLOUGH MECH.
HUB SET-35/80**

ITEM CODE: 270935

| | | |
|---|-----------------------|--------------------------------|
| 1 | SHAFT MATERIAL | GRADED STEEL |
| 2 | HOUSING MATERIAL | GRADED STEEL CASTING |
| 3 | SHAFT DIAMETER | 80MM |
| 4 | SHAFT NUT & WOSHER | SINGLE PIECE GRADED SG CASTING |
| 5 | HAULING CAPACITY | 35 HP |
| 6 | TURNOVER MECH. | MECHANICAL ADJUSTER |
| 7 | MAX. WEIGHT OF PLOUGH | 350 KGS |
| 8 | NO. OF FURROWS | 02 |
| 9 | ANTI FRICTION MECH. | NEEDLE BEARING |

SALIENT FEATURES

- ANTI FRICTION WOSHER WHICH INCREASES DURABILITY AND ALSO ENABLES SMOOTH ROTATING MOTION BETWEEN HOUSING AND LIMITING RING.
- SINGLE PIECE GRADED STEEL FORGING FOR HYDRAULIC CY. CLAMPING. HOUSING DESIGN WHICH SUPPORTS PERFECT ACCOMODATION OF PIPE (GUN WITH ALMOST ZERO TOLERANCE.
- SINGLE PIECE NUT & WOSHER WITH ALLEN KEY CLAMPING WHICH MAKES ASSEMBLING AND DISMANTLING HASSLE FREE.
- MAXIMUM DISTANCE FROM CENTRAL AXIS FOR OPTIMUM TORQUE GENERATION.
- THREADING AT THE REAR END OF THE SHAFT FOR EASY CLAMPING.



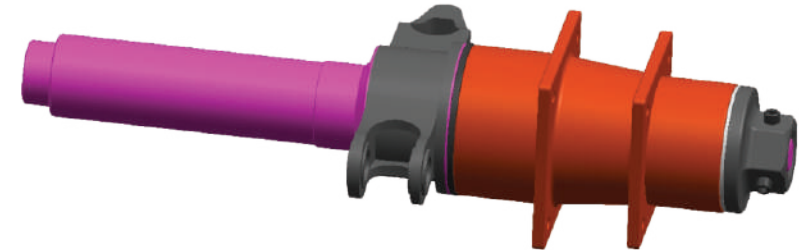
AGRICULTURE REVERSIBLE HYDRAULIC PLOUGH HUB SET-55

ITEM CODE: 2904

| | | |
|---|-----------------------|--------------------------------|
| 1 | SHAFT MATERIAL | GRADED STEEL |
| 2 | HOUSING MATERIAL | GRADED STEEL CASTING |
| 3 | SHAFT DIAMETER | 90MM |
| 4 | SHAFT NUT & WOSHER | SINGLE PIECE GRADED SG CASTING |
| 5 | HAULING CAPACITY | 55 HP |
| 6 | TURNOVER MECH. | HYDRAULIC CYLINDER |
| 7 | MAX. WEIGHT OF PLOUGH | 500 KG |
| 8 | NO. OF FURROWS | 03 |
| 9 | ANTI FRICTION MECH. | NEEDLE BEARING |

SALIENT FEATURES

- SINGLE PIECE GRADED STEEL FORGING FOR HYDRAULIC CY. CLAMPING.
- SINGLE PIECE NUT & WOSHER WITH ALLEN KEY CLAMPING WHICH MAKES ASSEMBLING AND DISMANTLING HASSLE FREE.
- MAXIMUM DISTANCE FROM CENTRAL AXIS FOR OPTIMUM TORQUE GENERATION.
- THREADING AT THE REAR END OF THE SHAFT FOR EASY CLAMPING.
- FORGED PIN ALONG WITH SPRING WOSHER FOR HORIZONTALLY CLAMPING THE CYLINDER.



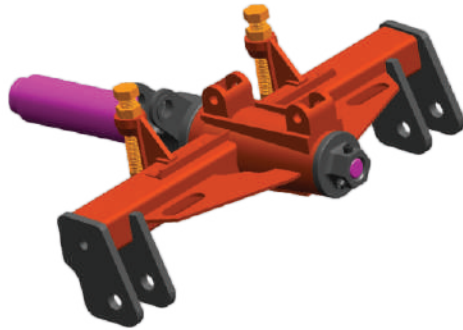
AGRICULTURE REVERSIBLE HYDRAULIC PLOUGH FAB. 10" HUB SET-45

ITEM CODE: 2910

| | | |
|---|-----------------------|--------------------------------|
| 1 | SHAFT MATERIAL | GRADED STEEL |
| 2 | HOUSING MATERIAL | GRADED STEEL CASTING |
| 3 | SHAFT DIAMETER | 80MM |
| 4 | SHAFT NUT & WOSHER | SINGLE PIECE GRADED SG CASTING |
| 5 | HAULING CAPACITY | 45 HP |
| 6 | TURNOVER MECH. | HYDRAULIC CYLINDER |
| 7 | MAX. WEIGHT OF PLOUGH | 450 KGS |
| 8 | NO. OF FURROWS | 02 |
| 9 | ANTI FRICTION MECH. | NEEDLE BEARING |

SALIENT FEATURES

- ANTI FRICTION WOSHER WHICH INCREASES DURABILITY AND ALSO ENABLES SMOOTH ROTATING MOTION BETWEEN HOUSING AND LIMITING RING.
- SINGLE PIECE GRADED STEEL FORGING FOR HYDRAULIC CY. CLAMPING.
- SINGLE PIECE NUT & WOSHER WITH ALLEN KEY CLAMPING WHICH MAKES ASSEMBLING AND DISMANTLING HASSLE FREE.
- THREADING AT THE REAR END OF THE SHAFT FOR EASY CLAMPING.
- FORGED PIN ALONG WITH SPRING WOSHER FOR HORIZONTALLY CLAMPING THE CYLINDER.



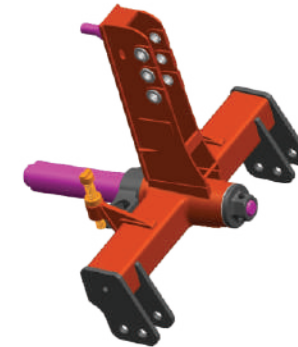
AGRICULTURE REVERSIBLE HY. PLOUGH TOP TO BOTTOM W/O COVER-35

ITEM CODE: 2905W

| | | |
|---|-----------------------|--------------------------------|
| 1 | SHAFT MATERIAL | GRADED STEEL |
| 2 | HOUSING MATERIAL | GRADED STEEL CASTING |
| 3 | SHAFT DIAMETER | 75/80MM |
| 4 | SHAFT NUT & WOSHER | SINGLE PIECE GRADED SG CASTING |
| 5 | HAULING CAPACITY | 35 HP |
| 6 | TURNOVER MECH. | HYDRAULIC CYLINDER |
| 7 | MAX. WEIGHT OF PLOUGH | 350/375 KGS |
| 8 | NO. OF FURROWS | 02 |
| 9 | ANTI FRICTION MECH. | NEEDLE BEARING |

SALIENT FEATURES

- SINGLE PIECE GRADED STEEL FORGING FOR HYDRAULIC CY. CLAMPING.
- SINGLE PIECE NUT & WOSHER WITH ALLEN KEY CLAMPING WHICH MAKES ASSEMBLING AND DISMANTLING HASSLE FREE.
- THREADING AT THE REAR END OF THE SHAFT FOR EASY CLAMPING.
- FORGED PIN ALONG WITH SPRING WOSHER FOR HORIZONTALLY CLAMPING THE CYLINDER.
- ALSO AVAILABLE FOR APPLICATION IN MECHANICAL AND SLOW MECHANICAL REVERSIBLE PLOUGHS.



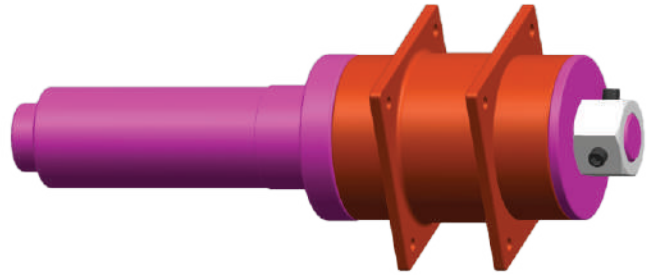
AGRICULTURE REVERSIBLE HYDRAULIC PLOUGH TOP TO BOTTOM-55

ITEM CODE: 2905I

| | | |
|---|-----------------------|--------------------------------|
| 1 | SHAFT MATERIAL | GRADED STEEL |
| 2 | HOUSING MATERIAL | GRADED STEEL CASTING |
| 3 | SHAFT DIAMETER | 90MM |
| 4 | SHAFT NUT & WOSHER | SINGLE PIECE GRADED SG CASTING |
| 5 | HAULING CAPACITY | 55 HP |
| 6 | TURNOVER MECH. | HYDRAULIC CYLINDER |
| 7 | MAX. WEIGHT OF PLOUGH | 550 KGS |
| 8 | NO. OF FURROWS | 03 |
| 9 | ANTI FRICTION MECH. | NEEDLE BEARING |

SALIENT FEATURES

- SINGLE PIECE GRADED STEEL FORGING FOR HYDRAULIC CY. CLAMPING.
- SINGLE PIECE NUT & WOSHER WITH ALLEN KEY CLAMPING WHICH MAKES ASSEMBLING AND DISMANTLING HASSLE FREE.
- THREADING AT THE REAR END OF THE SHAFT FOR EASY CLAMPING.
- FORGED PIN ALONG WITH SPRING WOSHER FOR HORIZONTALLY CLAMPING THE CYLINDER.
- HEAVY FORGED STOPPER BOLT FOR RESTRICTING THE MOTION OF CYLINDER.



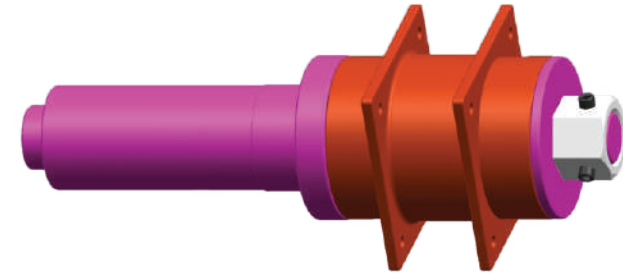
**AGRICULTURE REVERSIBLE PLOUGH SLOW
FAB. 8\"/>**

ITEM CODE: 8X90

| | | |
|---|-----------------------|--------------------------|
| 1 | SHAFT MATERIAL | GRADED STEEL |
| 2 | HOUSING MATERIAL | GRADED STEEL CASTING |
| 3 | SHAFT DIAMETER | 90MM |
| 4 | SHAFT NUT & WOSHER | CHECK NUT |
| 5 | HAULING CAPACITY | 50 HP |
| 6 | TURNOVER MECH. | MECHANICAL ADJUSTER |
| 7 | MAX. WEIGHT OF PLOUGH | 500 KGS |
| 8 | NO. OF FURROWS | 02 |
| 9 | ANTI FRICTION MECH. | TAPERED / NEEDLE BEARING |

SALIENT FEATURES

- ANTI FRICTION WOSHER WHICH INCREASES DURABILITY AND ALSO ENABLES SMOOTH ROTATING MOTION BETWEEN HOUSING AND LIMITING RING.
- SINGLE PIECE NUT & WOSHER WITH ALLEN KEY CLAMPING WHICH MAKES ASSEMBLING AND DISMANTLING HASSLE FREE.
- MAXIMUM DISTANCE FROM CENTRAL AXIS FOR OPTIMUM TORQUE GENERATION.
- THREADING AT THE REAR END OF THE SHAFT FOR EASY CLAMPING.
- EASY TO ASSEMBLE FOR HYDRAULIC AND SLOW MECHANICAL.



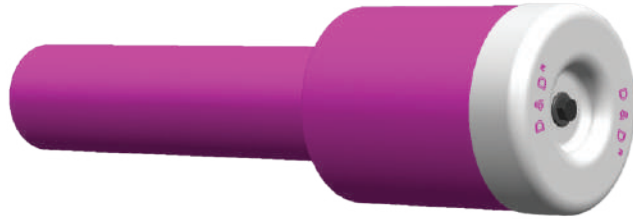
**AGRICULTURE REVERSIBLE PLOUGH
SLOW FAB. 8\"/>**

ITEM CODE: 8X100

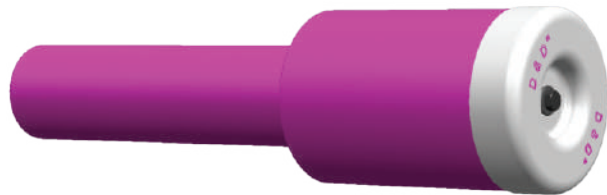
| | | |
|---|-----------------------|--------------------------|
| 1 | SHAFT MATERIAL | GRADED STEEL |
| 2 | HOUSING MATERIAL | GRADED STEEL CASTING |
| 3 | SHAFT DIAMETER | 100MM |
| 4 | SHAFT NUT & WOSHER | CHECK NUT |
| 5 | HAULING CAPACITY | 55 HP |
| 6 | TURNOVER MECH. | MECHANICAL ADJUSTER |
| 7 | MAX. WEIGHT OF PLOUGH | 600 KGS |
| 8 | NO. OF FURROWS | 03 |
| 9 | ANTI FRICTION MECH. | TAPERED / NEEDLE BEARING |

SALIENT FEATURES

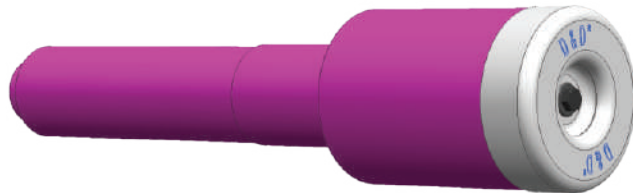
- ANTI FRICTION WOSHER WHICH INCREASES DURABILITY AND ALSO ENABLES SMOOTH ROTATING MOTION BETWEEN HOUSING AND LIMITING RING.
- SINGLE PIECE NUT & WOSHER WITH ALLEN KEY CLAMPING WHICH MAKES ASSEMBLING AND DISMANTLING HASSLE FREE.
- MAXIMUM DISTANCE FROM CENTRAL AXIS FOR OPTIMUM TORQUE GENERATION.
- THREADING AT THE REAR END OF THE SHAFT FOR EASY CLAMPING.
- EASY TO ASSEMBLE FOR HYDRAULIC AND SLOW MECHANICAL.



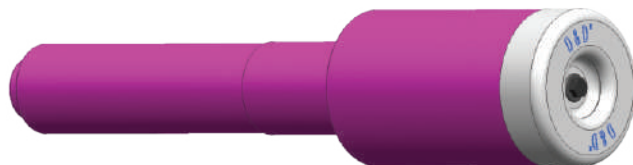
AGRICULTURE REVERSIBLE PLOUGH PIPE HUB SET 100X180



AGRICULTURE REVERSIBLE PLOUGH PIPE HUB SET 100X220



AGRICULTURE REVERSIBLE PLOUGH PIPE HUB SET 90X180



AGRICULTURE REVERSIBLE PLOUGH PIPE HUB SET 90X220

ITEM CODE: P1018

| | | |
|---|-----------------------|------------------------------------|
| 1 | SHAFT DIAMETER | 100MM |
| 2 | HAULING CAPACITY | 55 HP |
| 3 | TURNOVER MECH. | MECHANICAL ADJUSTER / HY. CYLINDER |
| 4 | MAX. WEIGHT OF PLOUGH | 550 KGS |
| 5 | NO. OF FURROWS | 03 |
| 6 | ANTI FRICTION MECH. | TAPERED / NEEDLE BEARING |

ITEM CODE: P1022

| | | |
|---|-----------------------|------------------------------------|
| 1 | SHAFT DIAMETER | 100MM |
| 2 | HAULING CAPACITY | 55 HP |
| 3 | TURNOVER MECH. | MECHANICAL ADJUSTER / HY. CYLINDER |
| 4 | MAX. WEIGHT OF PLOUGH | 550 KGS |
| 5 | NO. OF FURROWS | 03 |
| 6 | ANTI FRICTION MECH. | TAPERED / NEEDLE BEARING |

ITEM CODE: P0918

| | | |
|---|-----------------------|------------------------------------|
| 1 | SHAFT DIAMETER | 90MM |
| 2 | HAULING CAPACITY | 45-55 HP |
| 3 | TURNOVER MECH. | MECHANICAL ADJUSTER / HY. CYLINDER |
| 4 | MAX. WEIGHT OF PLOUGH | 500 KGS |
| 5 | NO. OF FURROWS | 03 |
| 6 | ANTI FRICTION MECH. | TAPERED / NEEDLE BEARING |

ITEM CODE: P0922

| | | |
|---|-----------------------|------------------------------------|
| 1 | SHAFT DIAMETER | 90MM |
| 2 | HAULING CAPACITY | 45-55 HP |
| 3 | TURNOVER MECH. | MECHANICAL ADJUSTER / HY. CYLINDER |
| 4 | MAX. WEIGHT OF PLOUGH | 500 KGS |
| 5 | NO. OF FURROWS | 03 |
| 6 | ANTI FRICTION MECH. | TAPERED / NEEDLE BEARING |

MECHANICAL ADJUSTERS



| CODE | DESCRIPTION |
|------|------------------------------------|
| 2717 | PLOUGH TOPLINK ASSEMBLY (ADJUSTER) |



| CODE | DESCRIPTION |
|-------|----------------------------------|
| 2717A | TOPLINK ASSEMBLY LONG (ADJUSTER) |



| CODE | DESCRIPTION |
|-------|-----------------------------------|
| 2717B | TOPLINK ASSEMBLY HEAVY (ADJUSTER) |



| CODE | DESCRIPTION |
|-------|------------------------------|
| 2717C | TOPLINK (MACHINE) (ADJUSTER) |

MECHANICAL ACCESSORIES



| CODE | DESCRIPTION |
|------|------------------------------|
| 2710 | MECHANICAL "NAKSHA" "4" HOLE |



| CODE | DESCRIPTION |
|------|-----------------------------------|
| 2711 | MECHANICAL "J" HOOK LEVER BRACKET |



| CODE | DESCRIPTION |
|------|-----------------------------------|
| 2712 | CENTER SHAFT LOCK PIN HOLDER-38mm |



| CODE | DESCRIPTION |
|-------|-----------------------------|
| 2713B | CENTER SHAFT LOCK PIN PLATE |



| CODE | DESCRIPTION |
|-------|-------------------------------------|
| 2714B | CENTER SHAFT LOCK PIN WITH NUT-38mm |



| CODE | DESCRIPTION |
|-------|-------------------------------------|
| 2715B | CENTER SHAFT LOCK PIN TUBE GUN-38mm |

MECHANICAL ACCESSORIES



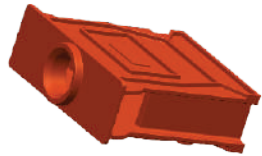
| CODE | DESCRIPTION |
|------|-----------------------|
| 2716 | "J" HOOK FORGED STEEL |



| CODE | DESCRIPTION |
|------|------------------------------|
| 2718 | TOPLINK ASSEMBLY PIN (LOWER) |



| CODE | DESCRIPTION |
|-------|--------------------------------------|
| 2719S | AGRI. REVER. PLOUGH MECH. SPRING SET |



| CODE | DESCRIPTION |
|------|----------------------|
| 2720 | PLOUGH SHAFT BOX 14" |



| CODE | DESCRIPTION |
|------|----------------------|
| 2721 | PLOUGH HUB CAP-45/55 |

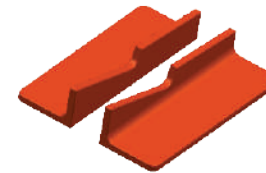


| CODE | DESCRIPTION |
|------|-------------------------|
| 2722 | PLOUGH "NAKSHA" PIN SET |

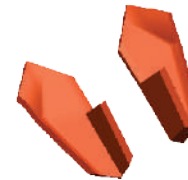
MECHANICAL ACCESSORIES



| CODE | DESCRIPTION |
|-------|-----------------------------------|
| 2709X | PLOUGH MECH. SHAFT COLLAR ONLY-45 |



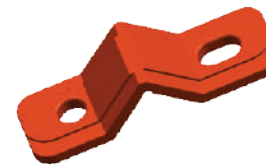
| CODE | DESCRIPTION |
|--------|--|
| 2724LR | AGRI. REVER. PLOUGH SMALL FURROW (CHIMNEY) |



| CODE | DESCRIPTION |
|--------|---|
| 2723LR | AGRI. REVER. PLOUGH SMALL FURROW (KAVADI) |



| CODE | DESCRIPTION |
|--------|--------------------------------------|
| 2725LR | AGRI. REVER. PLOUGH BAR CLAMP- 25x40 |



| CODE | DESCRIPTION |
|------|------------------------------------|
| 2726 | AGRI. REVER. PLOUGH V-CLAMP- 50x50 |

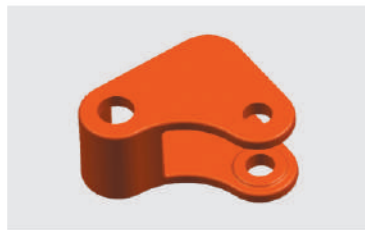
MINI MECHANICAL ACCESSORIES



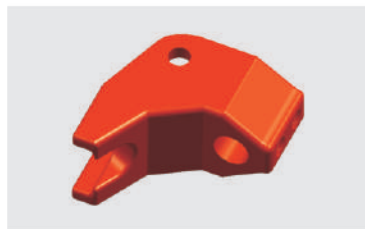
| CODE | DESCRIPTION |
|-------|---|
| 2804X | AGRI. REVER. PLOUGH MECH. MINI SHAFT COLLAR ONLY-45 |



| CODE | DESCRIPTION |
|------|--|
| 2810 | AGRI. REVER. PLOUGH MECH. MINI "NAKSHA" "4" HOLE |

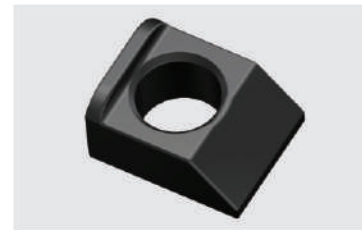


| CODE | DESCRIPTION |
|------|---|
| 2811 | AGRI. REVER. PLOUGH MECH. MINI "J" HOOK LEVER BRACKET |



| CODE | DESCRIPTION |
|------|--|
| 2812 | AGRI. REVER. PLOUGH MECH. MINI HOLDER (NEW)-25 |

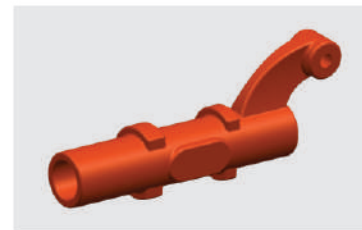
MINI MECHANICAL ACCESSORIES



| CODE | DESCRIPTION |
|------|--|
| 2813 | AGRI. REVER. PLOUGH MECH. MINI LOCK PLATE (NEW)-25 |



| CODE | DESCRIPTION |
|------|---|
| 2814 | AGRI. REVER. PLOUGH MECH. MINI CENTER SHAFT LOCK PIN WITH NUT |



| CODE | DESCRIPTION |
|------|---|
| 2815 | AGRI. REVER. PLOUGH MECH. MINI GUN (NEW)-25 |



| CODE | DESCRIPTION |
|------|--|
| 2816 | AGRI. REVER. PLOUGH MECH. MINI "J" HOOK FORGED STEEL |

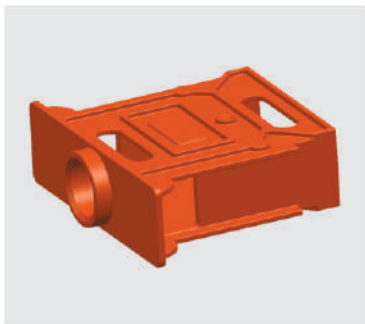
MINI MECHANICAL ACCESSORIES



| CODE | DESCRIPTION |
|------|---|
| 2817 | AGRI. REVER. PLOUGH MECH. MINI TOPLINK (NEW)-25 |



| CODE | DESCRIPTION |
|------|--|
| 2818 | AGRI. REVER. PLOUGH MECH. MINI TOPLINK GATTI PIN W. BUSH |



| CODE | DESCRIPTION |
|------|--|
| 2820 | AGRI. REVER. PLOUGH MECH. MINI SHAFT BOX-10" |

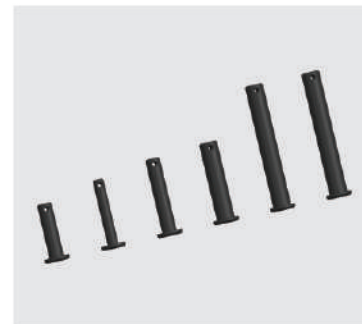
MINI MECHANICAL ACCESSORIES



| CODE | DESCRIPTION |
|------|---|
| 2821 | AGRI. REVER. PLOUGH MECH. MINI HUB CAP-25 |

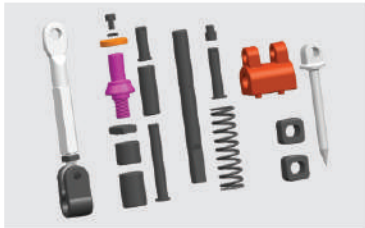


| CODE | DESCRIPTION |
|-------|---|
| 2819S | AGRI. REVER. PLOUGH MECH. MINI SPRING SET |



| CODE | DESCRIPTION |
|-------|---|
| 2822S | AGRI. REVER. PLOUGH MECH. MINI NAKSHA PIN SET |

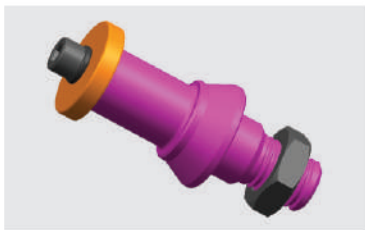
SLOW MECHANICAL ACCESSORIES



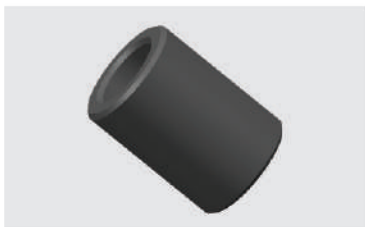
| CODE | DESCRIPTION |
|--------|---------------------------------------|
| 1210AN | AGRI. REVER. PLOUGH SLOW ACC. SET-NEW |



| CODE | DESCRIPTION |
|--------|---|
| 1210AZ | AGRI. REVER. PLOUGH SLOW LEVER BRACKET ACC. |

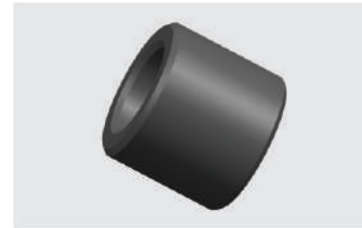


| CODE | DESCRIPTION |
|------|---|
| 1218 | AGRI. REVER. PLOUGH SLOW TOPLINK LOWER PIN WITH NUT-50x25 |

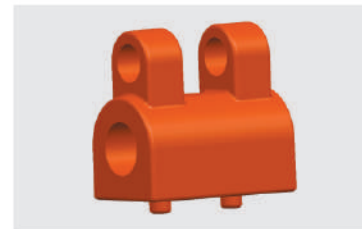


| CODE | DESCRIPTION |
|------|-------------------------------------|
| 1214 | AGRI. REVER. PLOUGH SLOW BUSH 40X80 |

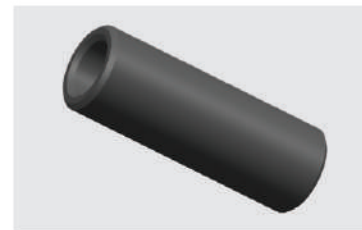
SLOW MECHANICAL ACCESSORIES



| CODE | DESCRIPTION |
|------|---------------------------------------|
| 1215 | AGRI. REVER. PLOUGH SLOW BUSH 40x35MM |



| CODE | DESCRIPTION |
|------|-------------------------------------|
| 1216 | AGRI. REVER. PLOUGH SLOW BUSH 45X80 |



| CODE | DESCRIPTION |
|------|-------------------------------------|
| 1211 | AGRI. REVER. PLOUGH SLOW BUSH 28X80 |



| CODE | DESCRIPTION |
|-------|---|
| 1219N | AGRI. REVER. PLOUGH SLOW PENCIL PIN (NEW) |

SLOW MECHANICAL ACCESSORIES



| CODE | DESCRIPTION |
|------|------------------------------------|
| 1221 | AGRI. REVER. PLOUGH SLOW PIN 18x55 |



| CODE | DESCRIPTION |
|-------|-------------------------------------|
| 1224B | AGRI. REVER. PLOUGH SLOW SPRING-5mm |



| CODE | DESCRIPTION |
|------|---|
| Z1 | AGRI. REVER. PLOUGH SLOW BRACKET PIN 20x110 |



| CODE | DESCRIPTION |
|------|------------------------------------|
| Z2 | AGRI. REVER. PLOUGH SLOW PIN 18x25 |

SLOW MECHANICAL ACCESSORIES



| CODE | DESCRIPTION |
|------|---|
| Z3 | AGRI. REVER. PLOUGH SLOW BRACKET PIN 25x250 (PARTING) |



| CODE | DESCRIPTION |
|------|---|
| 1217 | AGRI. REVER. PLOUGH SLOW MECH. TOPLINK ASSEMBLY |

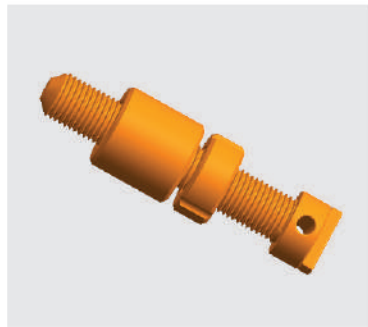


| CODE | DESCRIPTION |
|-------|-------------------------------------|
| 1224A | AGRI. REVER. PLOUGH SLOW SPRING-4mm |

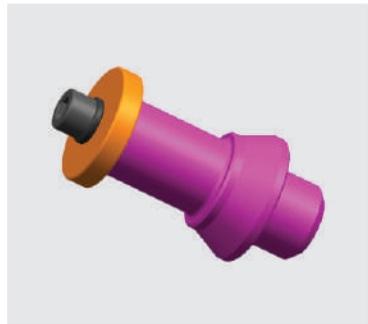


| CODE | DESCRIPTION |
|-------|--|
| 1210Z | AGRI. REVER. PLOUGH SLOW LEVER BRACKET |

HYDRAULIC ACCESSORIES



| CODE | DESCRIPTION |
|------|--------------------------------------|
| 11/8 | TTB STOPPER BOLT WITH D.NUT 1-1/8x12 |

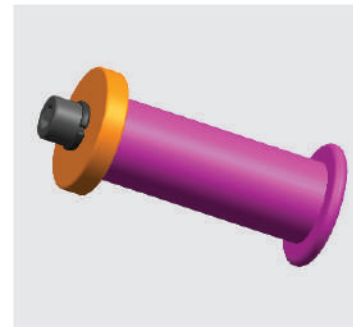


| CODE | DESCRIPTION |
|------|---------------------------------------|
| 5030 | PLOUGH TURNING CYLINDER PIN (50x30MM) |

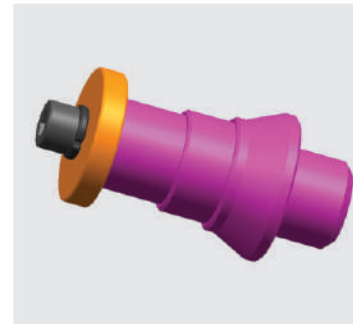


| CODE | DESCRIPTION |
|------|--|
| 8030 | PLOUGH TURNING CYLINDER PIN UP (80x30MM) |

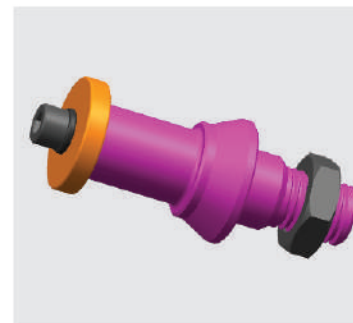
HYDRAULIC ACCESSORIES



| CODE | DESCRIPTION |
|------|---|
| 3090 | PLOUGH TURNING CYLINDER PIN LOWER (30x90MM) |



| CODE | DESCRIPTION |
|-------|---|
| 5030B | PLOUGH TURNING CYLINDER PIN (50x30MM) D. STEP |



| CODE | DESCRIPTION |
|-------|--|
| 5030N | PLOUGH TURNING CYLINDER PIN (50x30MM) WITH NUT |

ONLY SHAFTS



| CODE | DESCRIPTION |
|---------|--|
| 270945S | AGRICULTURE REVERSIBLE PLOUGH MECH. SHAFT-45 |



| CODE | DESCRIPTION |
|-------|--|
| 0104S | AGRICULTURE REVERSIBLE PLOUGH MECH. SHAFT-35 |



| CODE | DESCRIPTION |
|-------|--|
| 2908S | AGRICULTURE REVERSIBLE PLOUGH HY. SHAFT-45 |

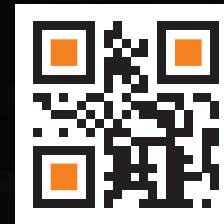
ALL KINDS
OF
CUSTOMIZED
SHAFTS
AVAILABLE
AS PER YOUR
REQUIREMENTS

D&D[®]

PLOUGH

MFR OF REVERSIBLE PLOUGH SHAFTS AND ACCESSORIES

GANESH AGRO INDUSTRIES
SHUBAN AGRITECH PVT LTD



- 📍 Plot no. 1/121, Sardar Ind. Area, Padavla, Rajkot.
- 📞 +91 95124 56403/2, +91 98254 20705
- ✉️ contact@dndplough.in, shubanagritech@gmail.com
- 🌐 www.dndplough.in